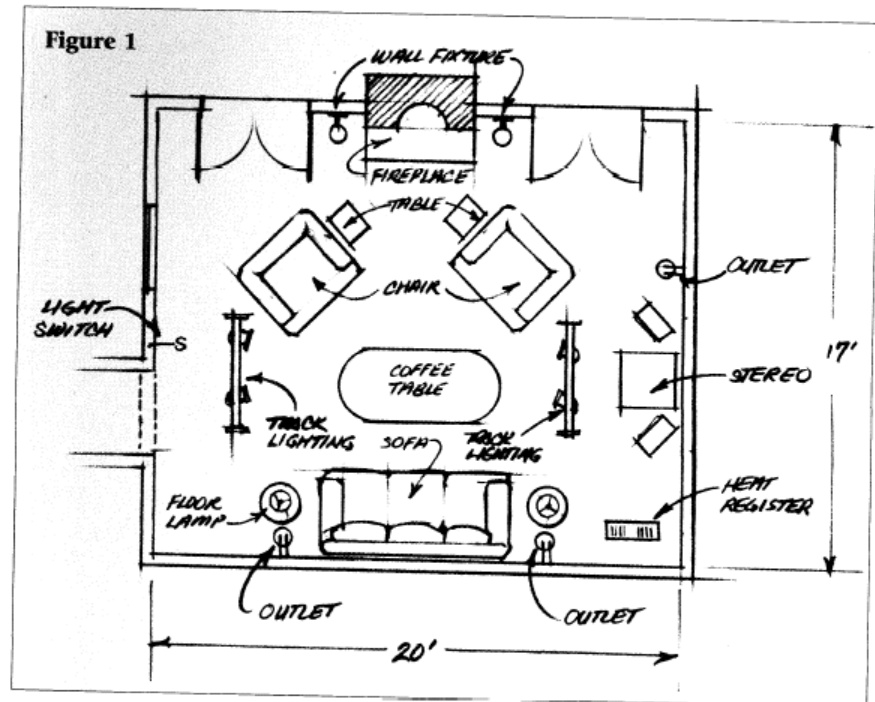
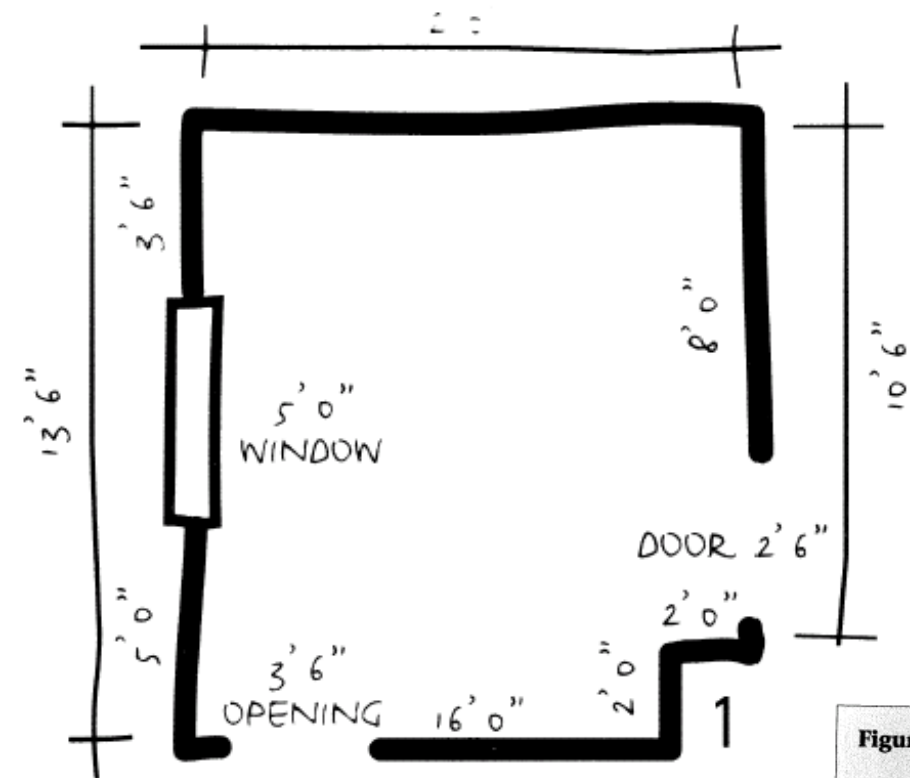


# DRAWING A PLAN VIEW

Interior Design Lesson 5

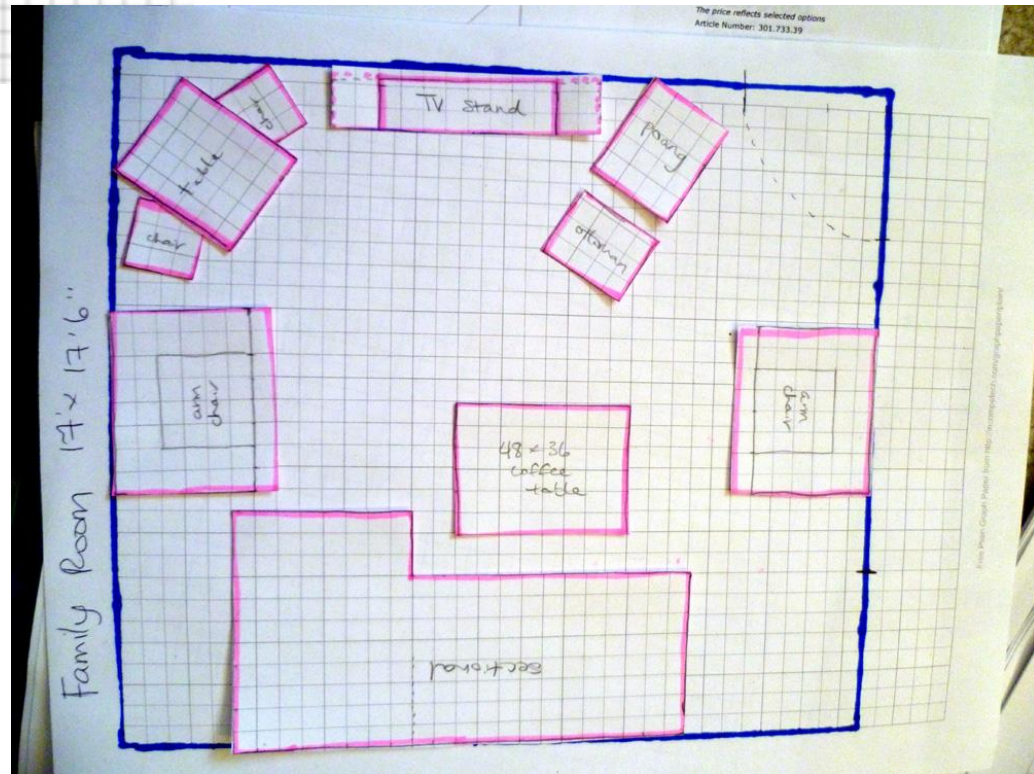
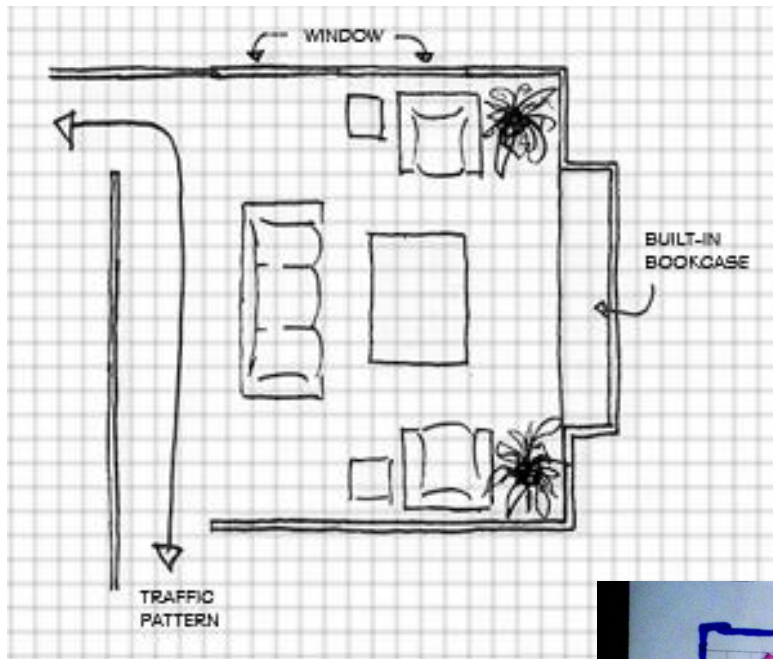
# INFORMAL SKETCH

- ◉ The sketch should also include notations. These are used to:
- ◉ Keep track of traffic flow (circulation paths).
- ◉ Note critical dimensions that have to be maintained.
- ◉ Instead of drawing certain items you may just add them as an arrow and a note. Items such as cable input, phone jacks, radiators, heat registers, air ducts, and light fixtures as some of these items do not have standardized architectural symbols.
- ◉ The position of rooms surrounding the room you are working on.
- ◉ Overall dimensions of the room
- ◉ Any other information that you would like to record



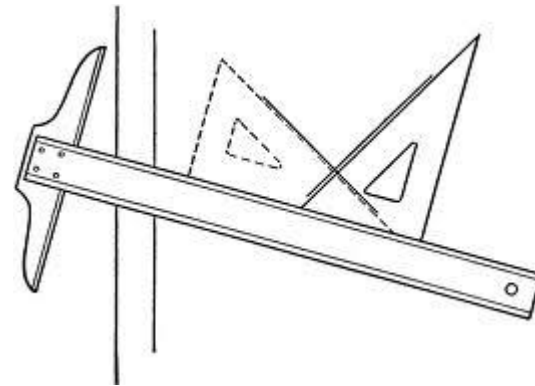
# PLAN VIEW DRAWING

- ◉ These drawings represent the actual layout of the room to some sort of scale.
- ◉ If your layout is to scale you will only have to dimension critical items such as overall lengths, widths, wall dimensions. All of your furniture, while drawn to scale should not be dimensioned, as sizes can be determined from the item list (B.O.M.).
- ◉ One method of drawing a plan view involves using graph paper and setting one square to equal a certain number (setting the scale).



# PLAN VIEW DRAWING

- Another method involves starting with a blank piece of paper and using drafting tools such as a 'T' square, triangles, and an architectural ruler in the proper scale, carefully drawing the room layout.





# Architectural Blueprint Symbols

